

Isa sweater - extra colorblock opties

Patroon inclusief naadwaarde

Isa sweater - extra colorblock options

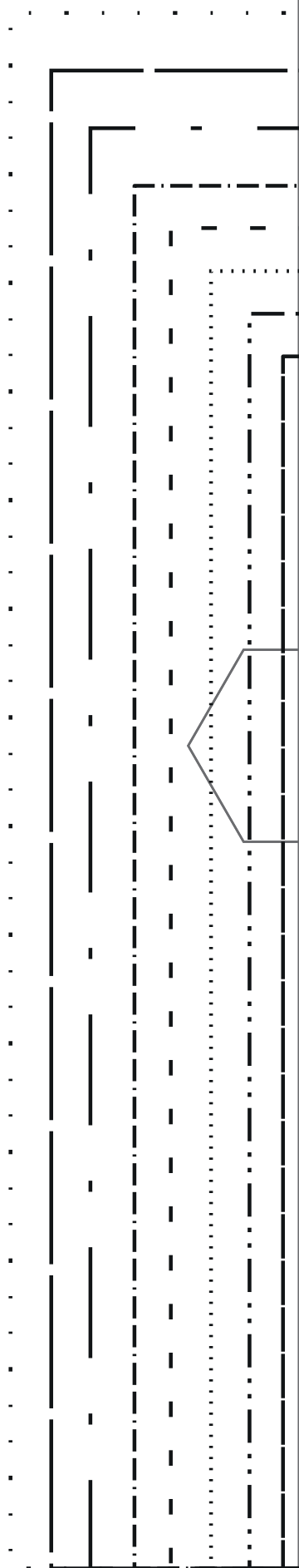
Seam allowance included

Maten - Sizes

80
86	-----
92	————
98	-----
104
110	-----
116	————
122	-----
128
134	-----
140	-----
146	—— — —
152	————
158

Testvierkant
Test square

5cm x 5cm



1 x knippen aan stofvouw

Front colorblock 'stripes'

Part 2

Cut 1 on fold

Bob Chalk

#1sasweater

Voorpand colorblock 'stripes'

Deel 3

1 x knippen aan stofvouw

Front colorblock 'stripes'

Part 3

Cut 1 on fold

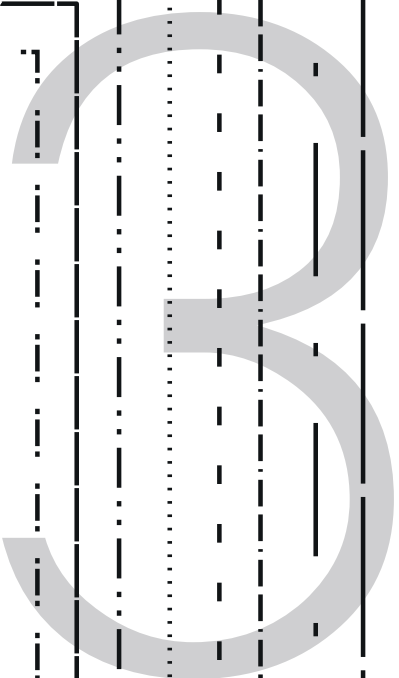


1 x knippen aan stofvouw

Front colorblock 'stripes'

Part 1

Cut 1 on fold



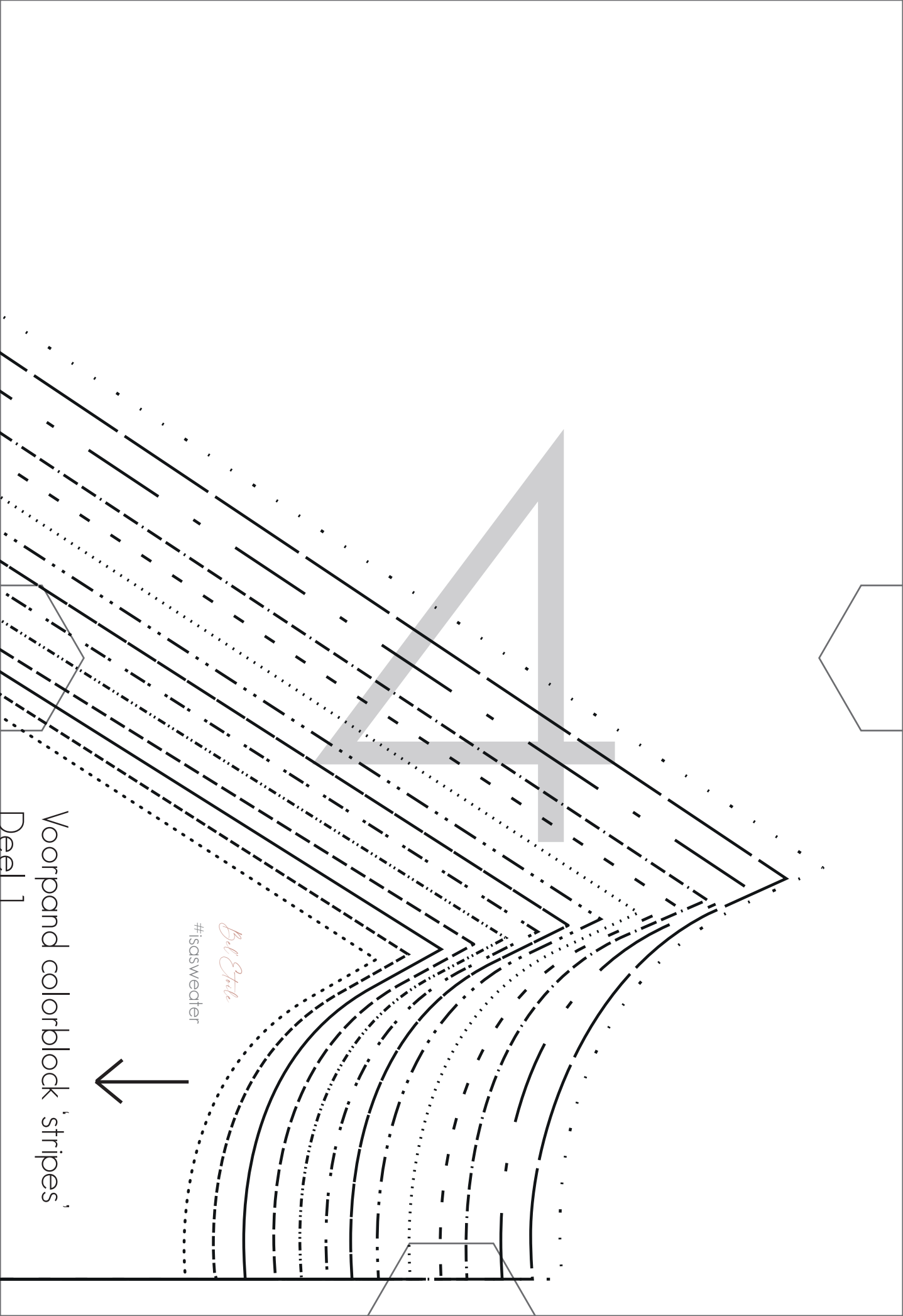
Deel 2

#isasweater

Voorpand colorblock 'stripes'

Deel 2





Bel Etik
#Isasweter



Voorpand colorblock 'stripes'

Deel 1

5



Voorpand colorblock 'pieces'

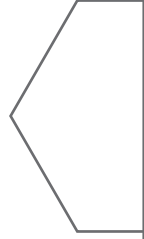
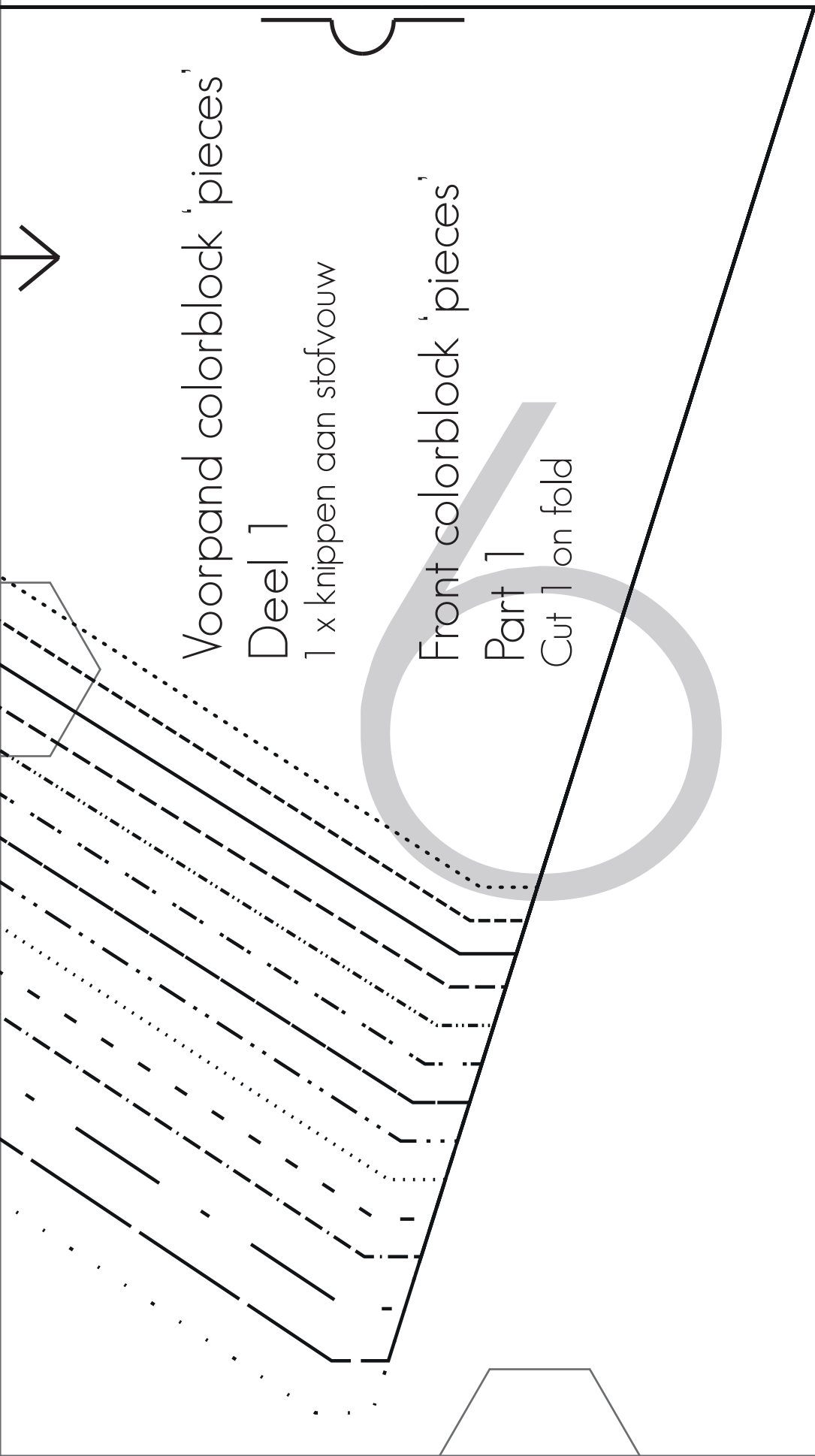
Deel 1

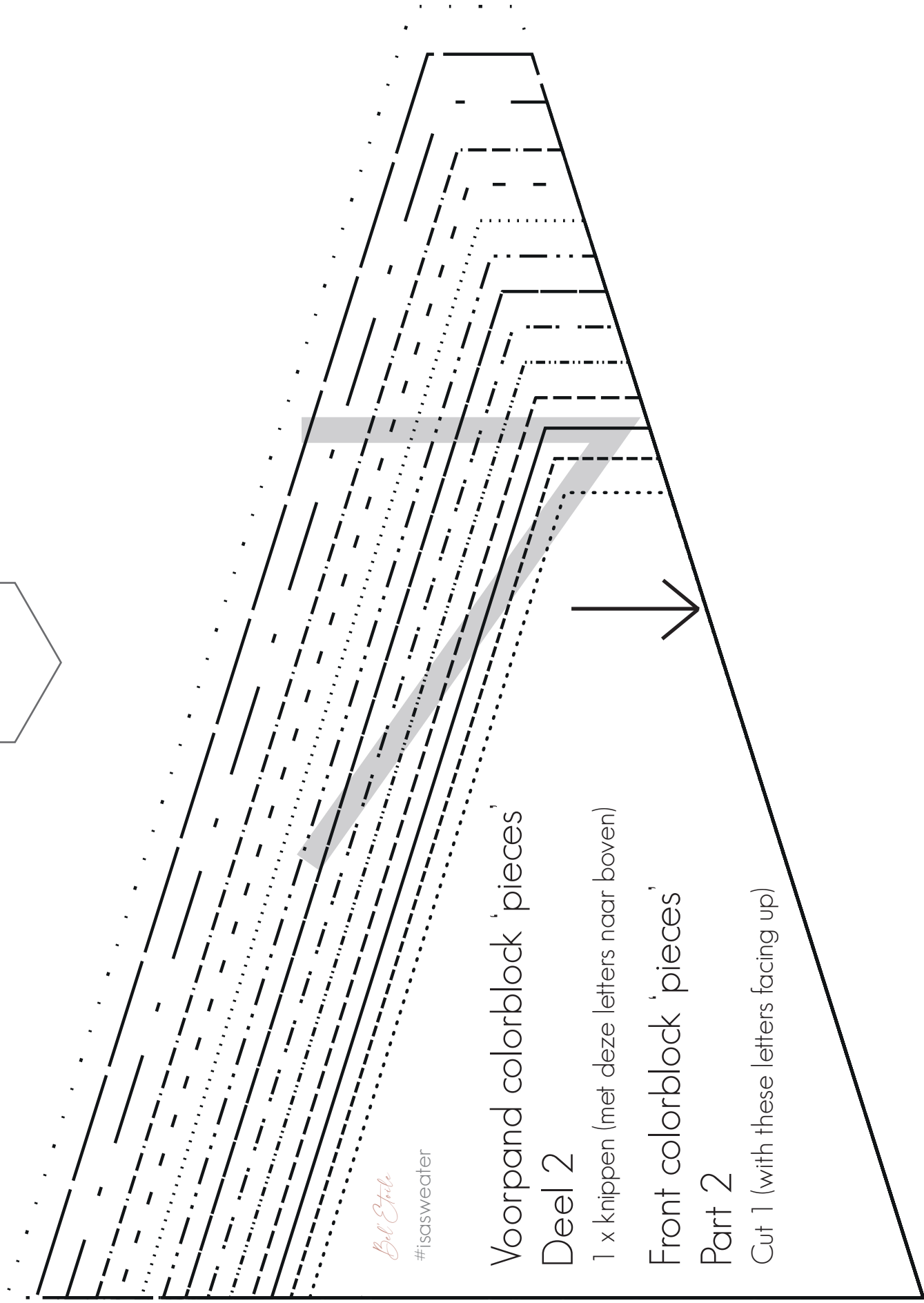
1 x knippen aan stofvouw

Front colorblock 'pieces'

Part 1

Cut 1 on fold





Bel Etale

#isasweater

Voorpand colorblock 'pieces'

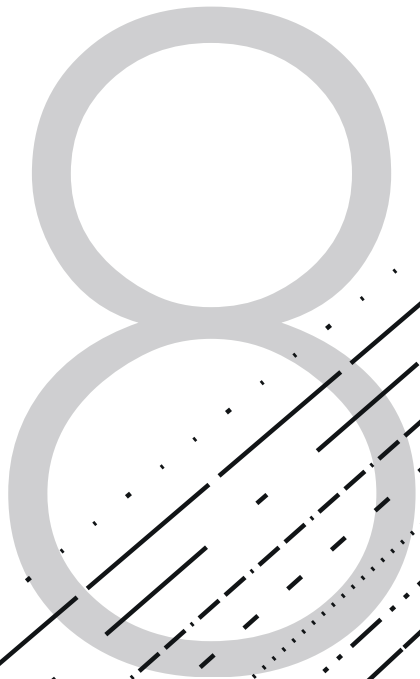
Deel 2

1 x knippen (met deze letters naar boven)

Front colorblock 'pieces'

Part 2

Cut 1 (with these letters facing up)

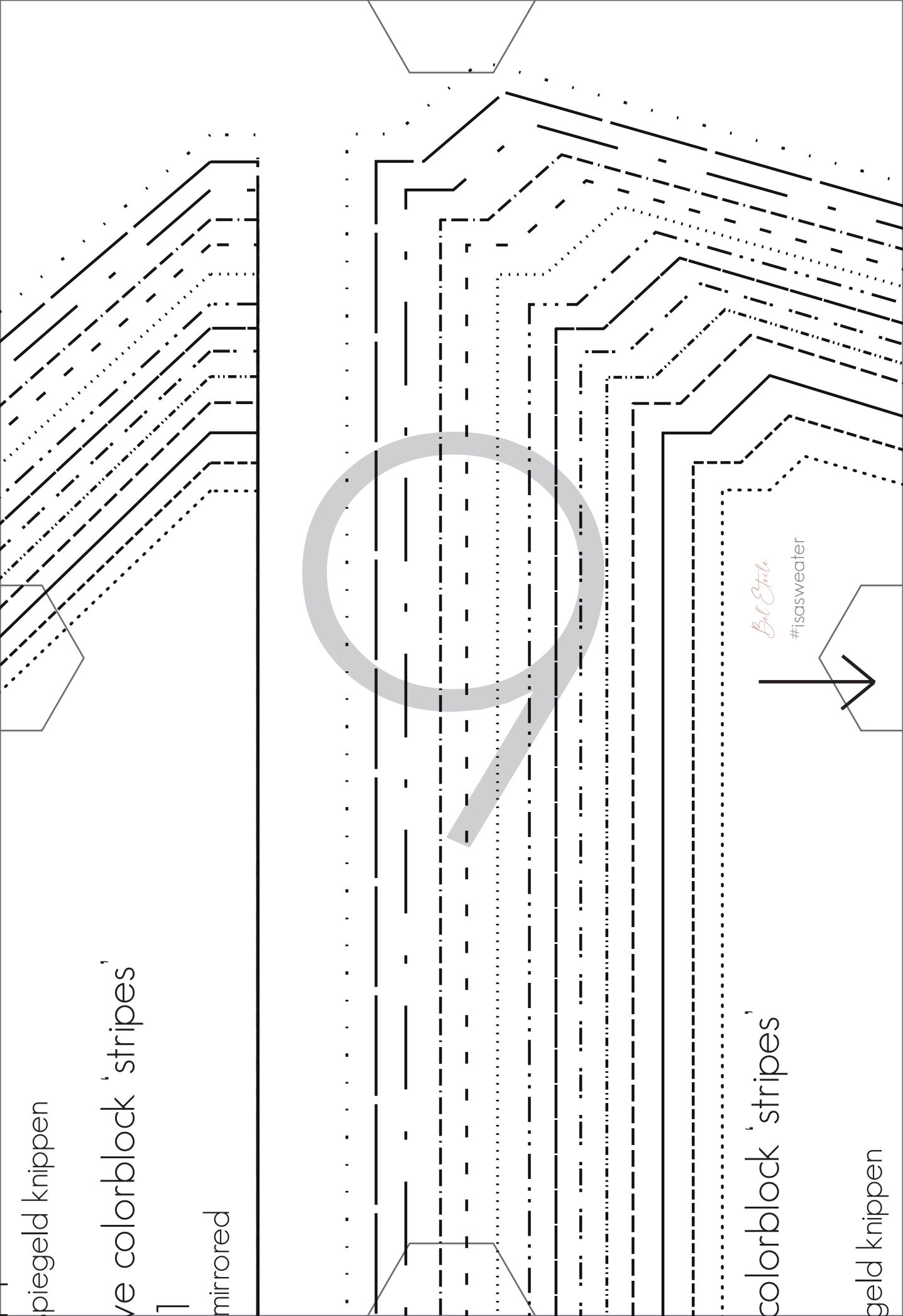


Bill E. Jule

#isasweater



w colorblock 'stripes'



piegeld knippen

ve colorblock 'stripes'

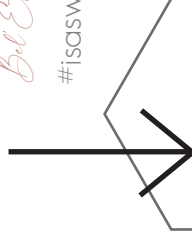
1

mirrored

colorblock 'stripes'

geld knippen

Bel Etale
#isaswearer



colorblock 'stripes'

ored

colorblock 'stripes'

3

iegeld knippen

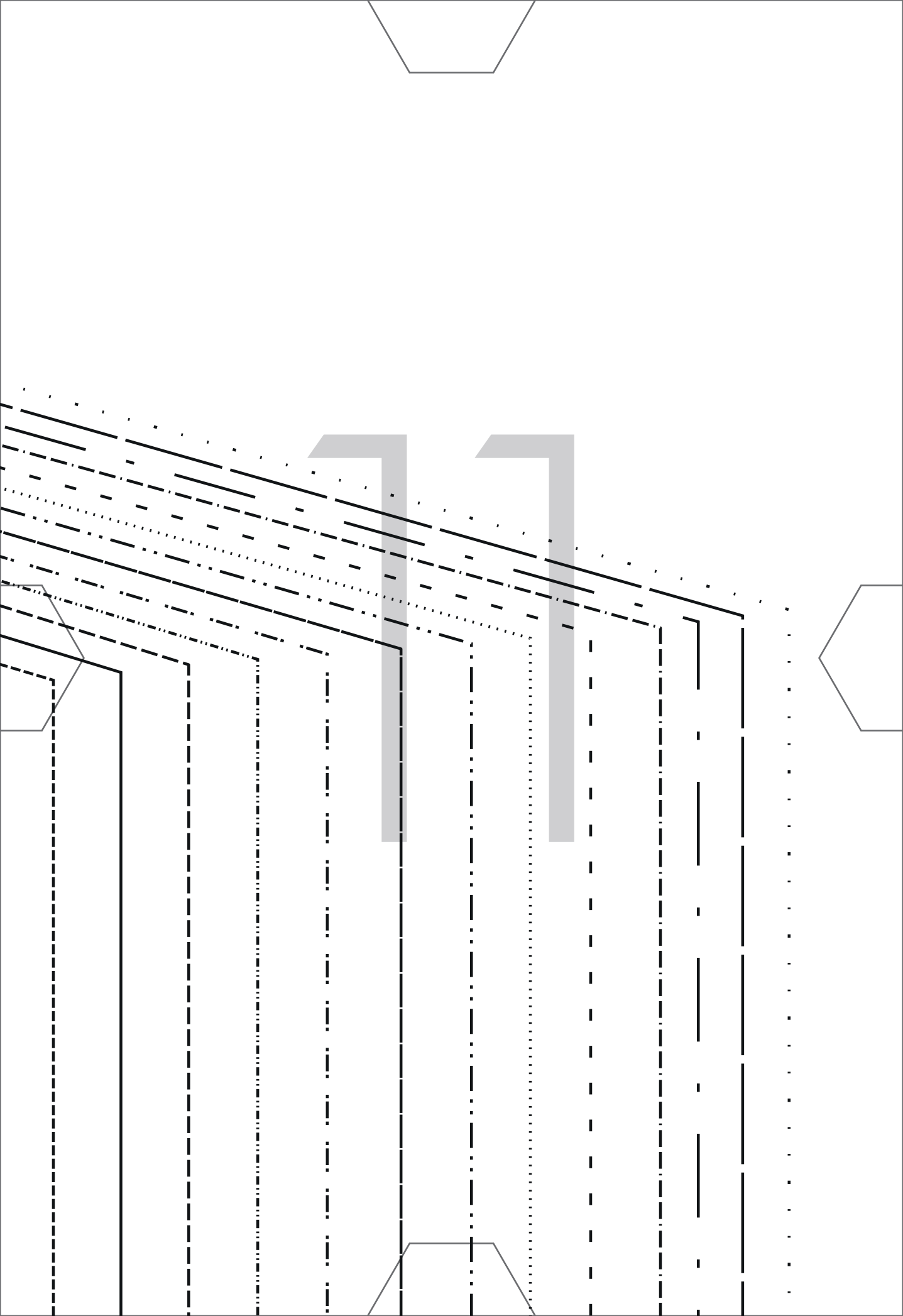
e colorblock 'stripes'

mirrored

Bel Style

#isaswearer





Voorpand colorblock 'pieces'

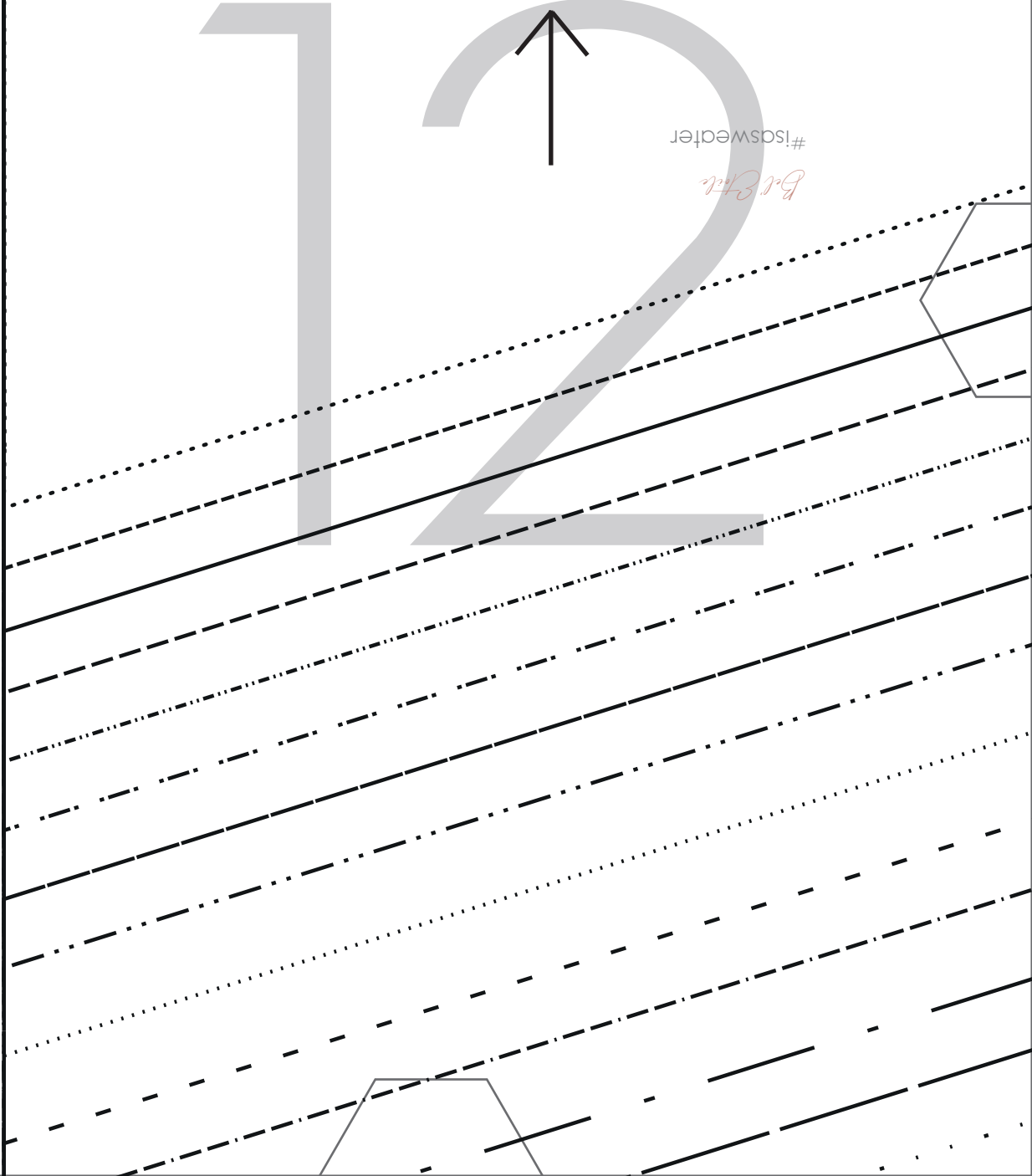
Deel 3

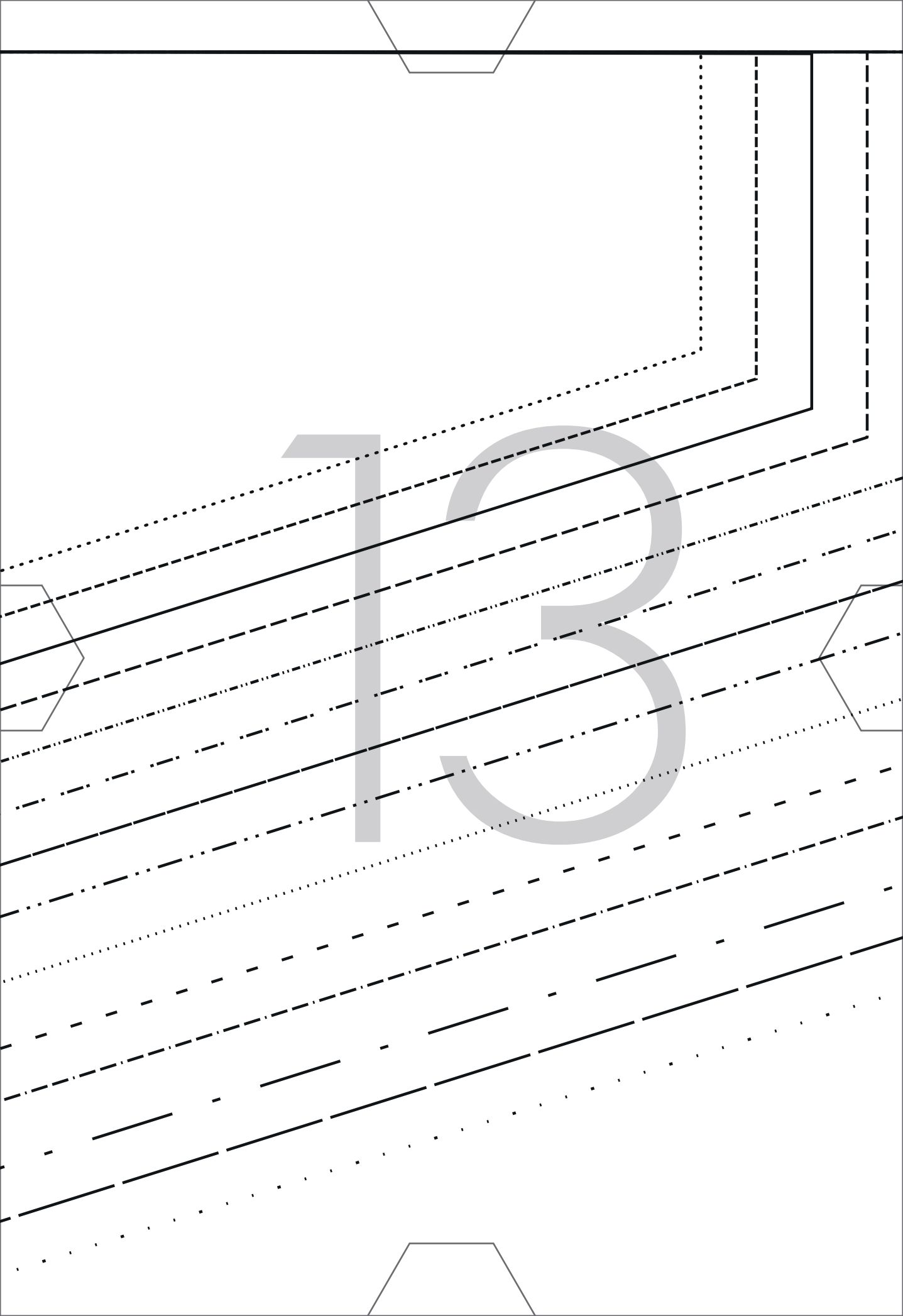
1 x knippen (met deze letters naar boven)

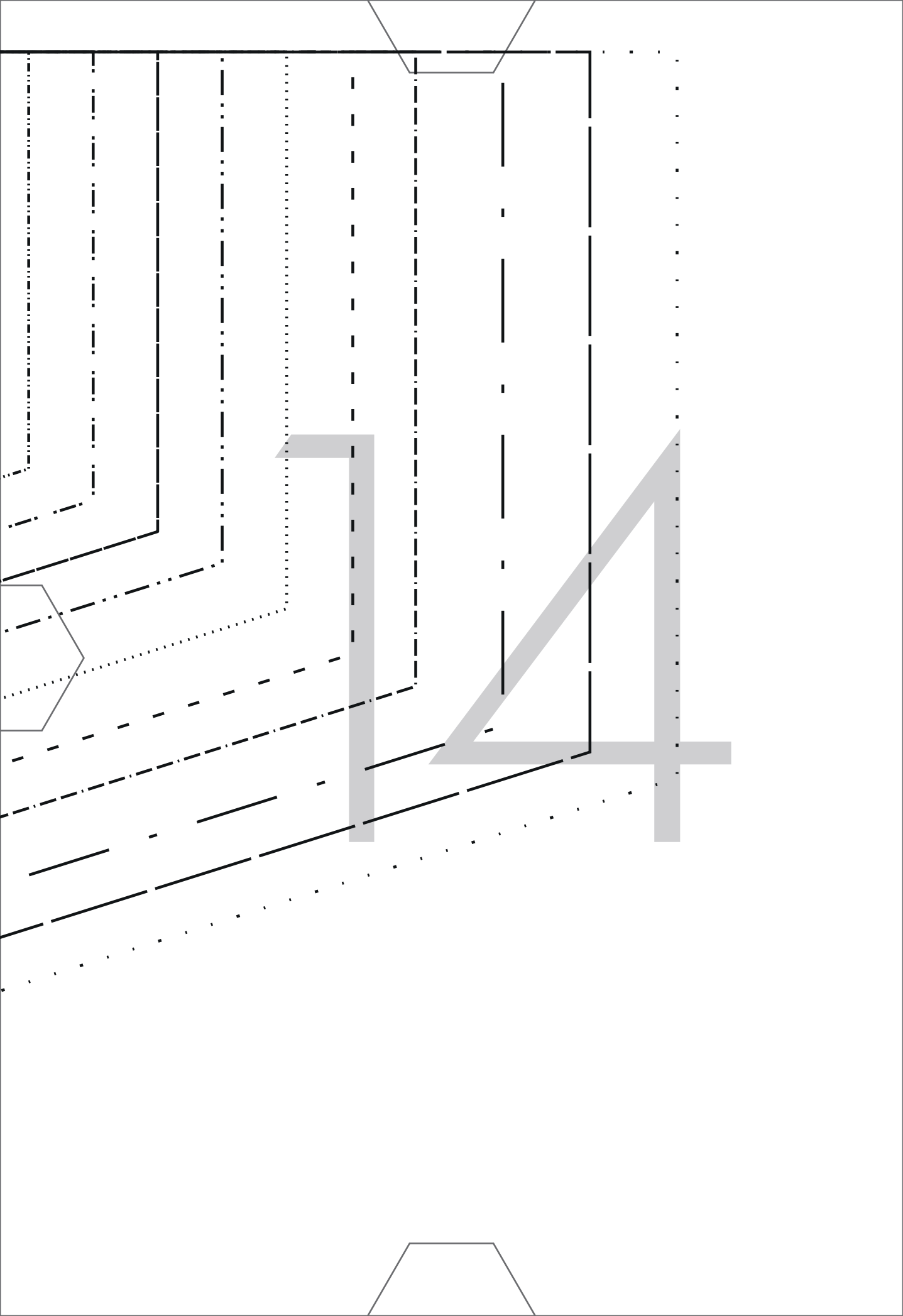
Front colorblock 'pieces'

Part 3

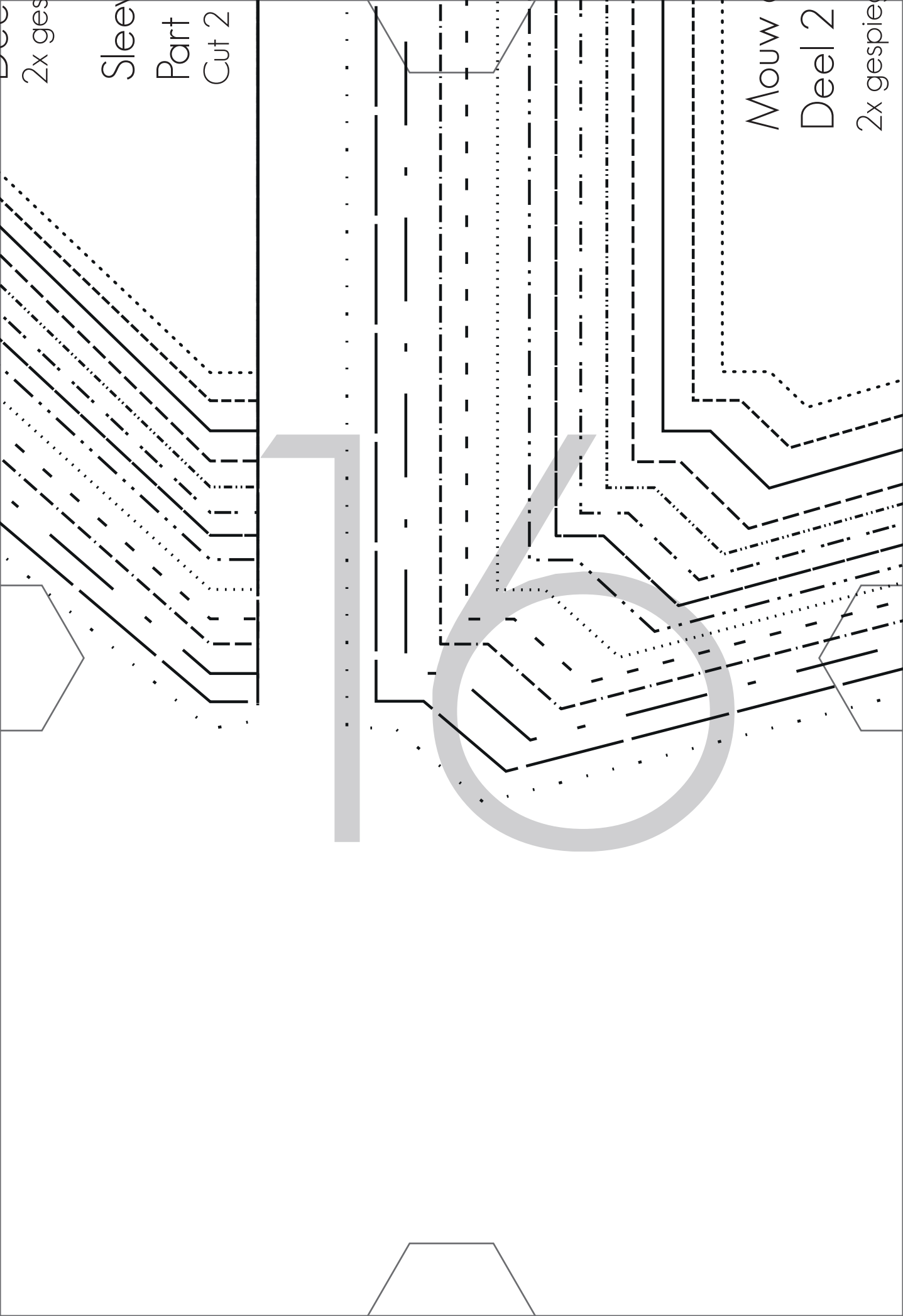
Cut 1 (with these letters facing up)







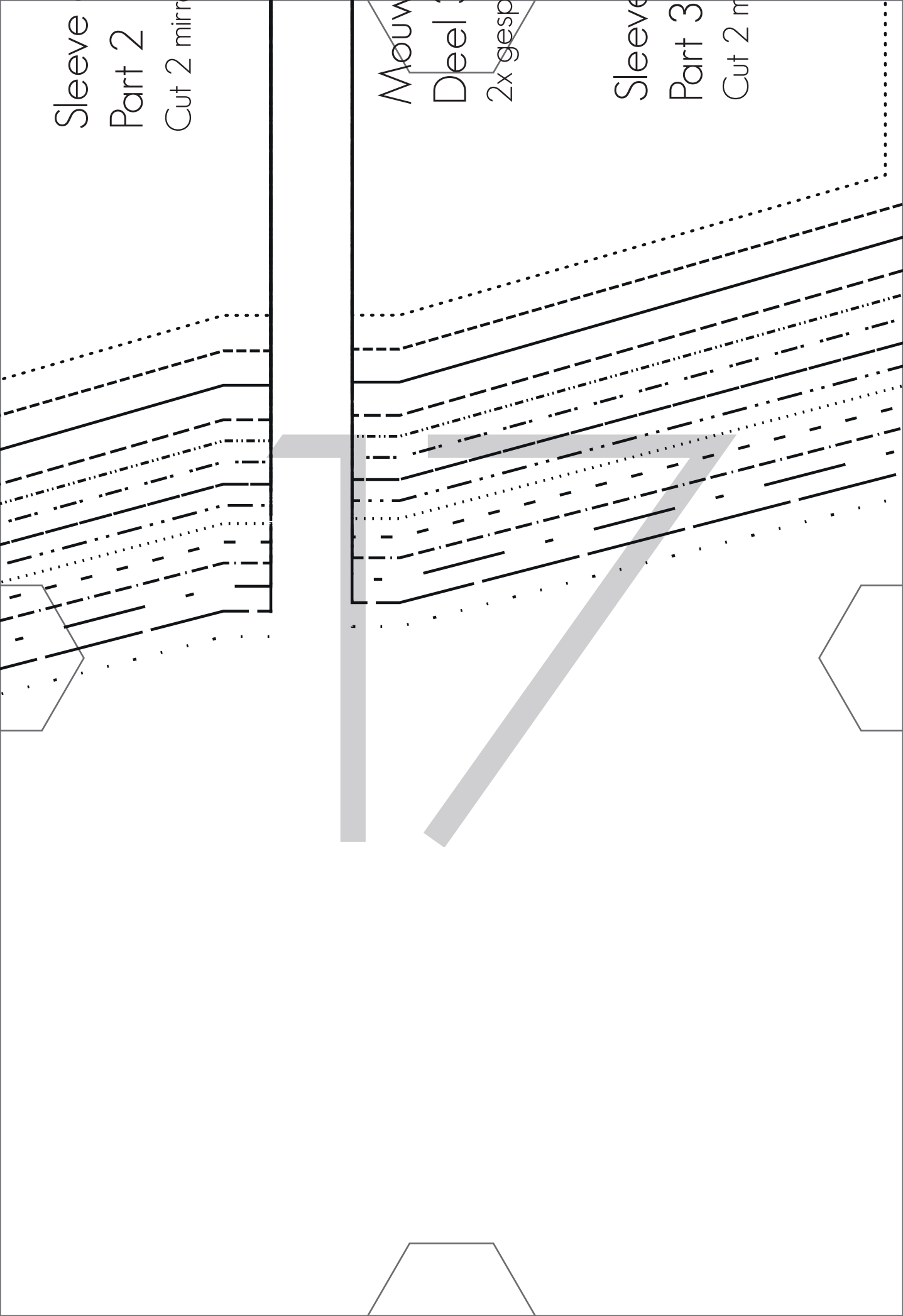
15

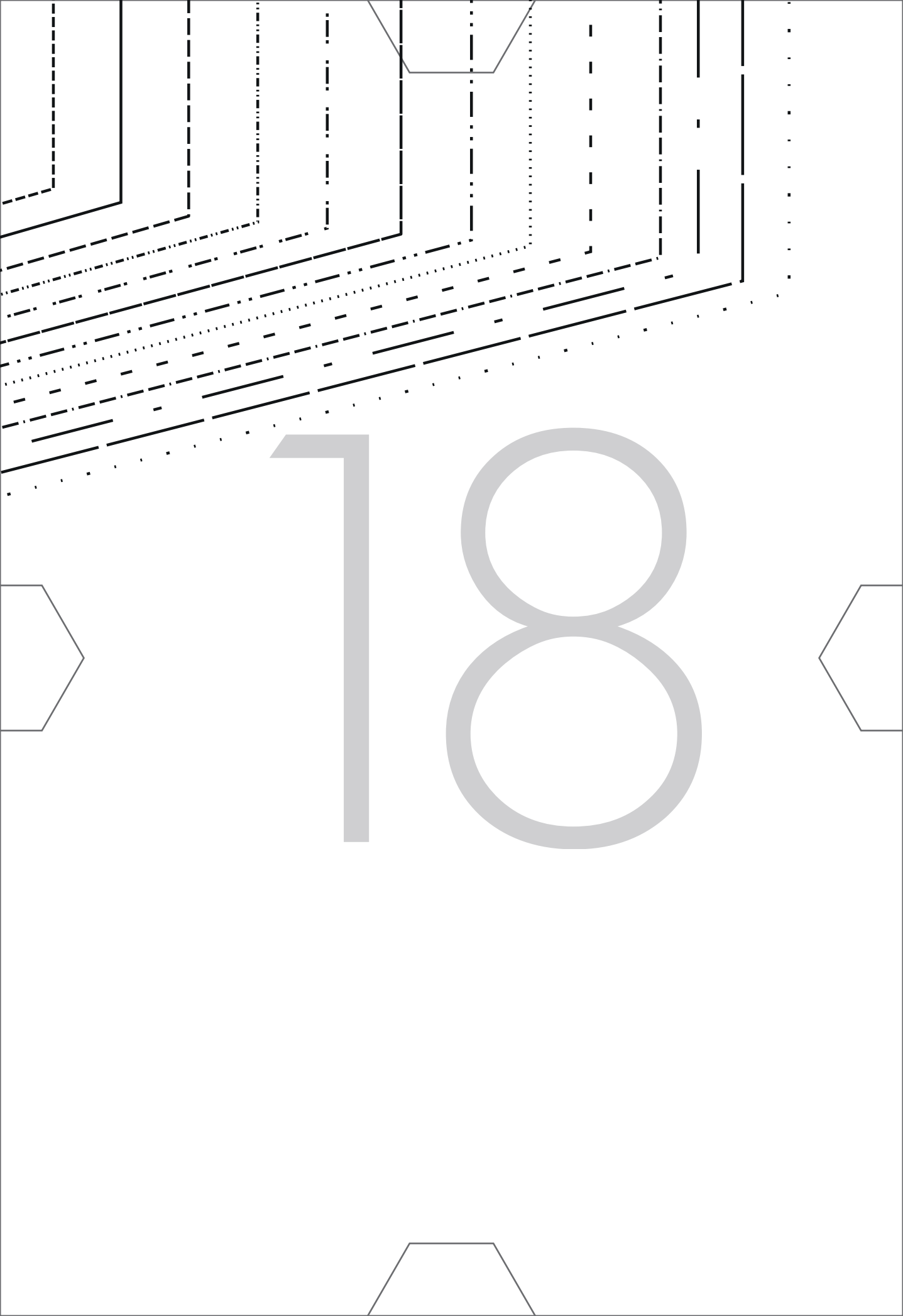


Sleeve
Part 2
Cut 2 mirr

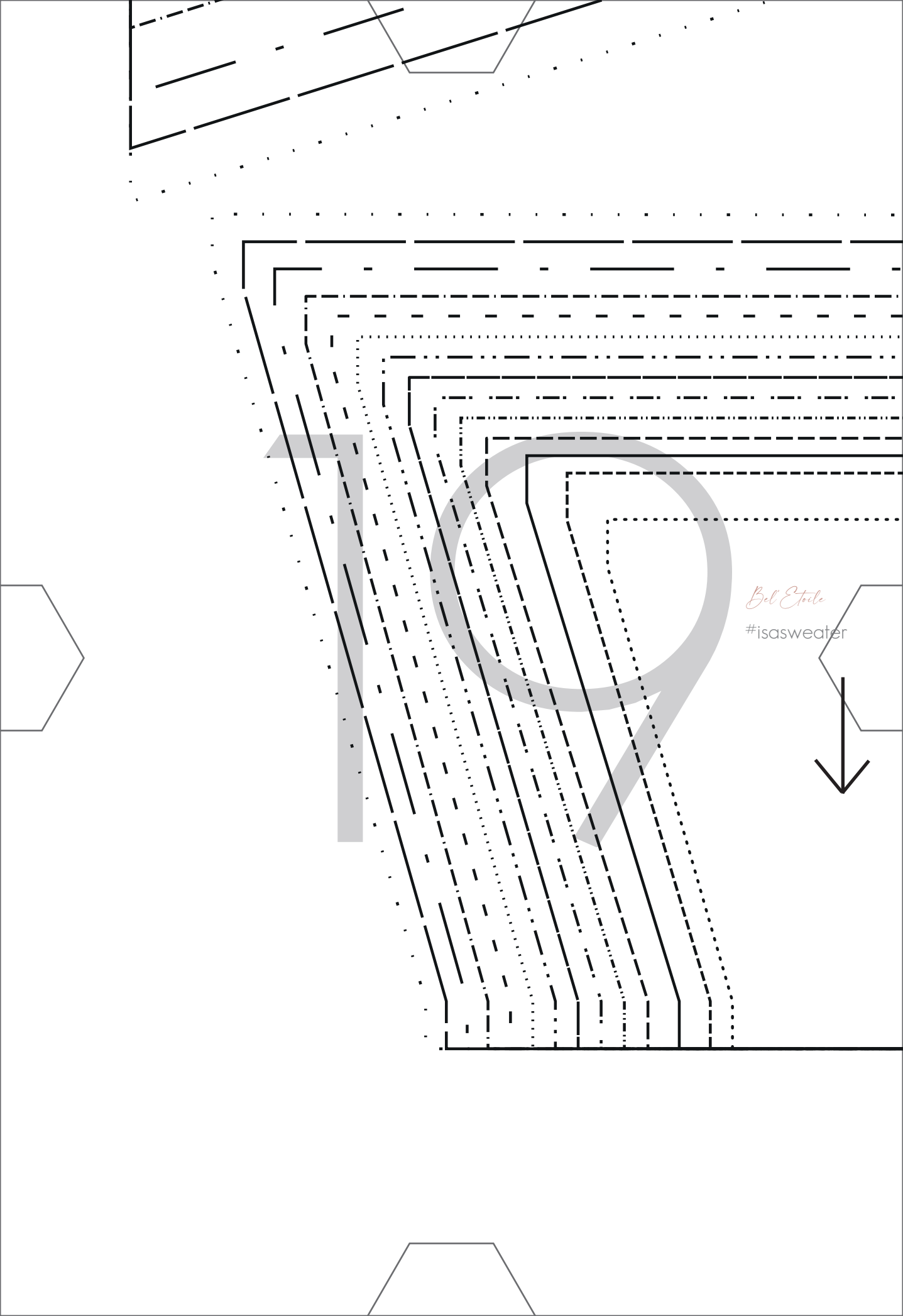
Mouw
Deel 2
2x gesp

Sleeve
Part 3
Cut 2 m





18



Bel Etoile

#isasweater



Rechtermouw colorblock 'pieces'

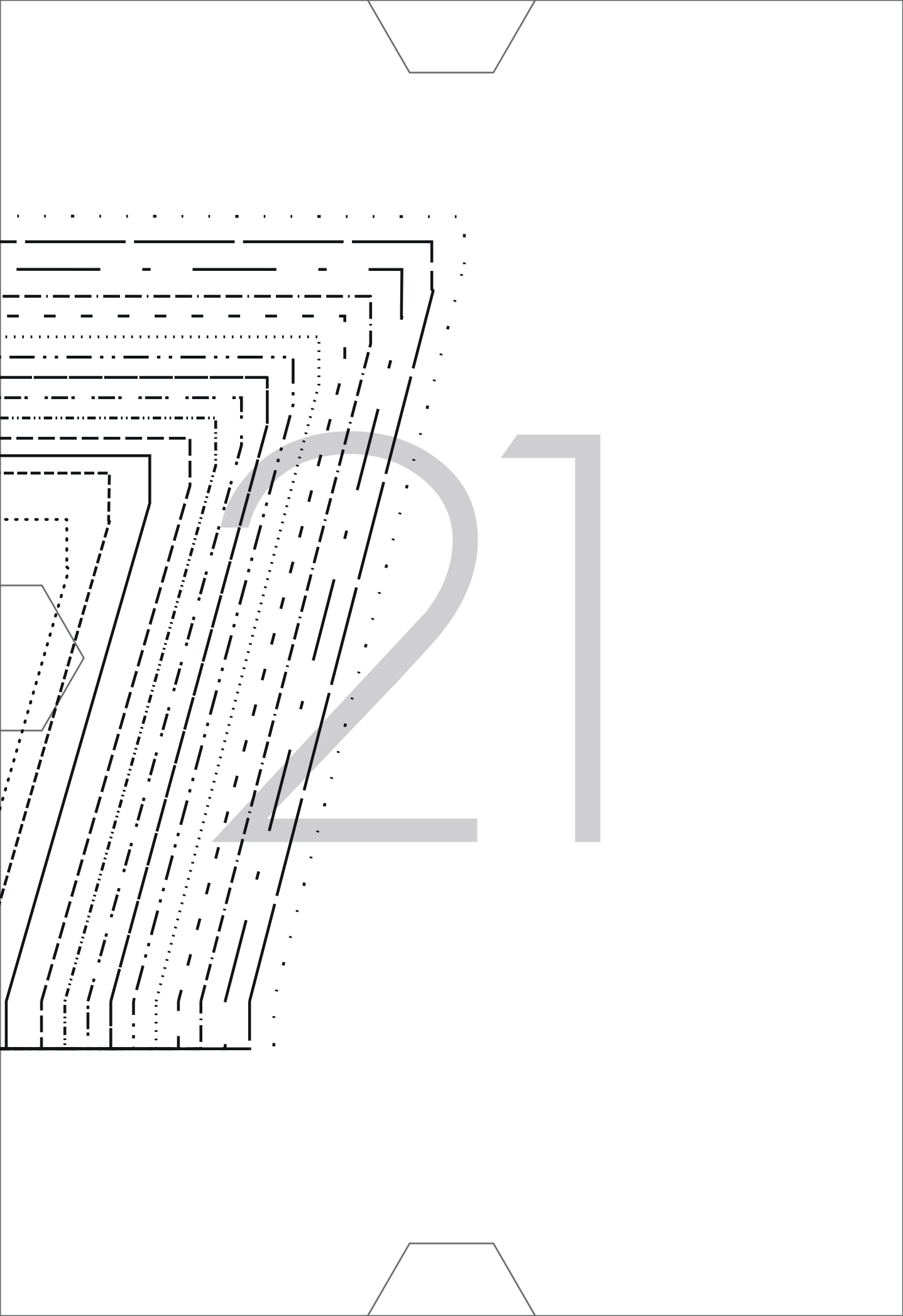
Deel 2

1x knippen (met deze letters naar boven)

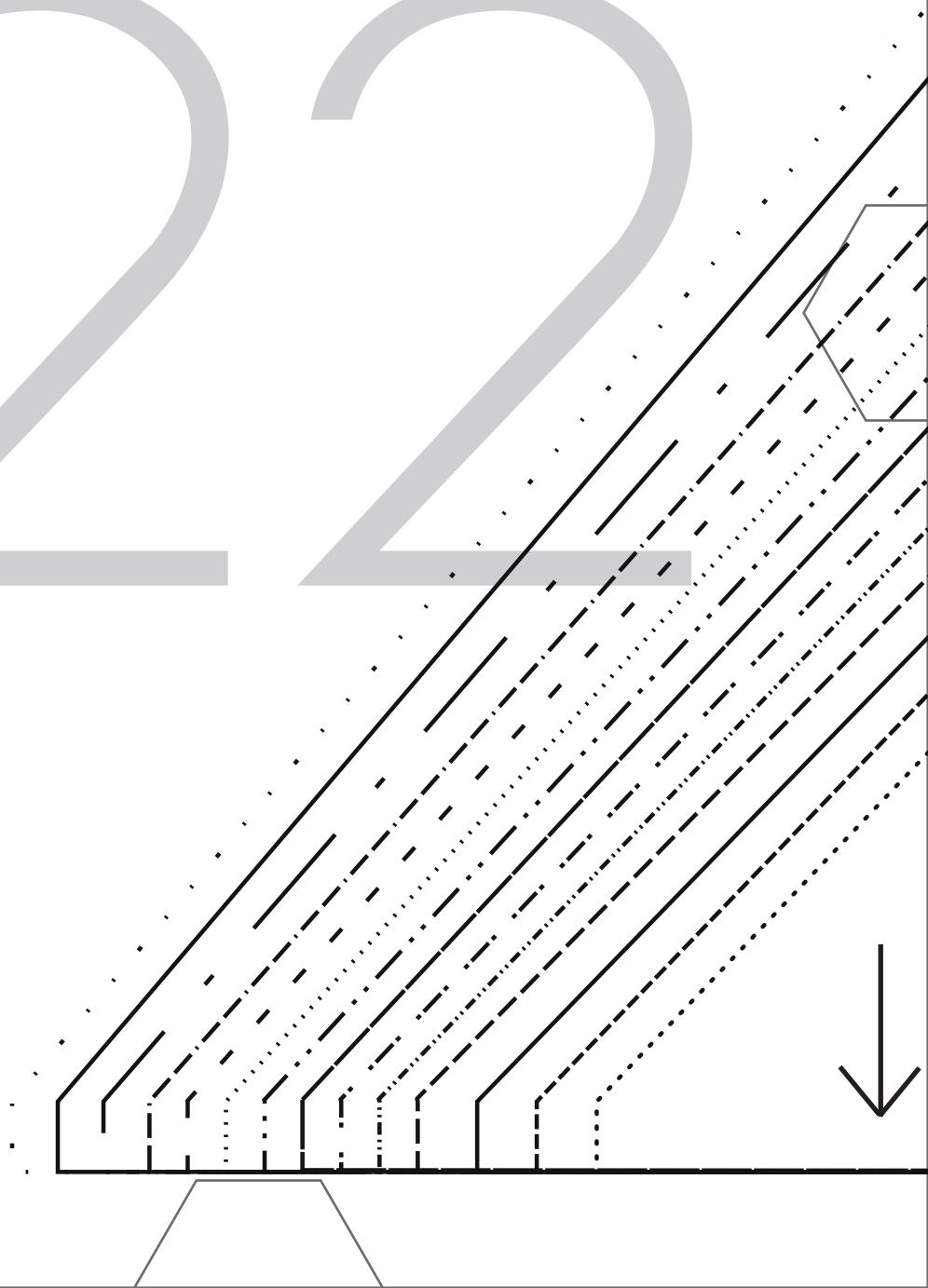
Right sleeve colorblock 'pieces'

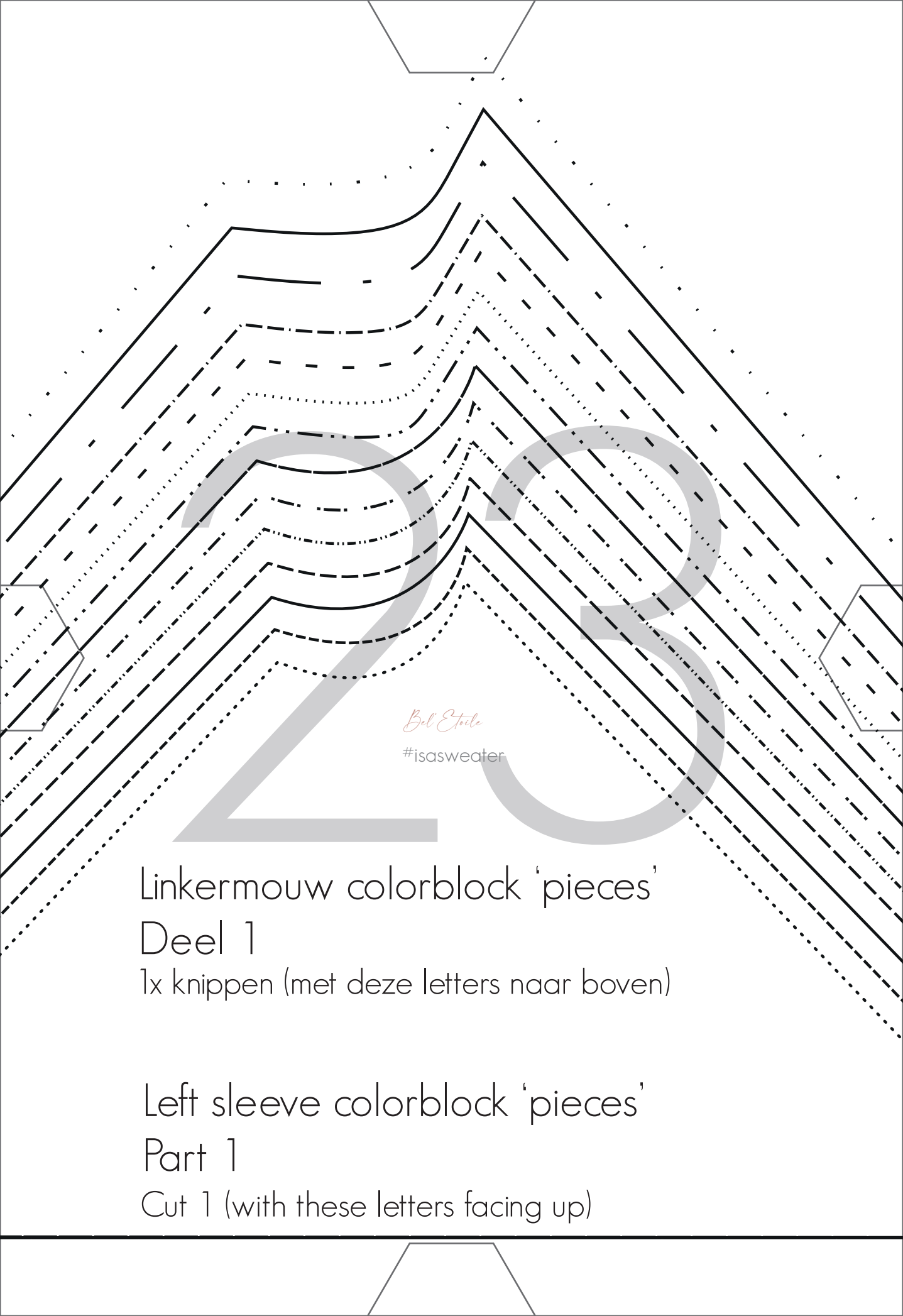
Part 2

Cut 1 (with these letters facing up)



22





Bel' Etiele'

#isasweater

Linkermouw colorblock 'pieces'

Deel 1

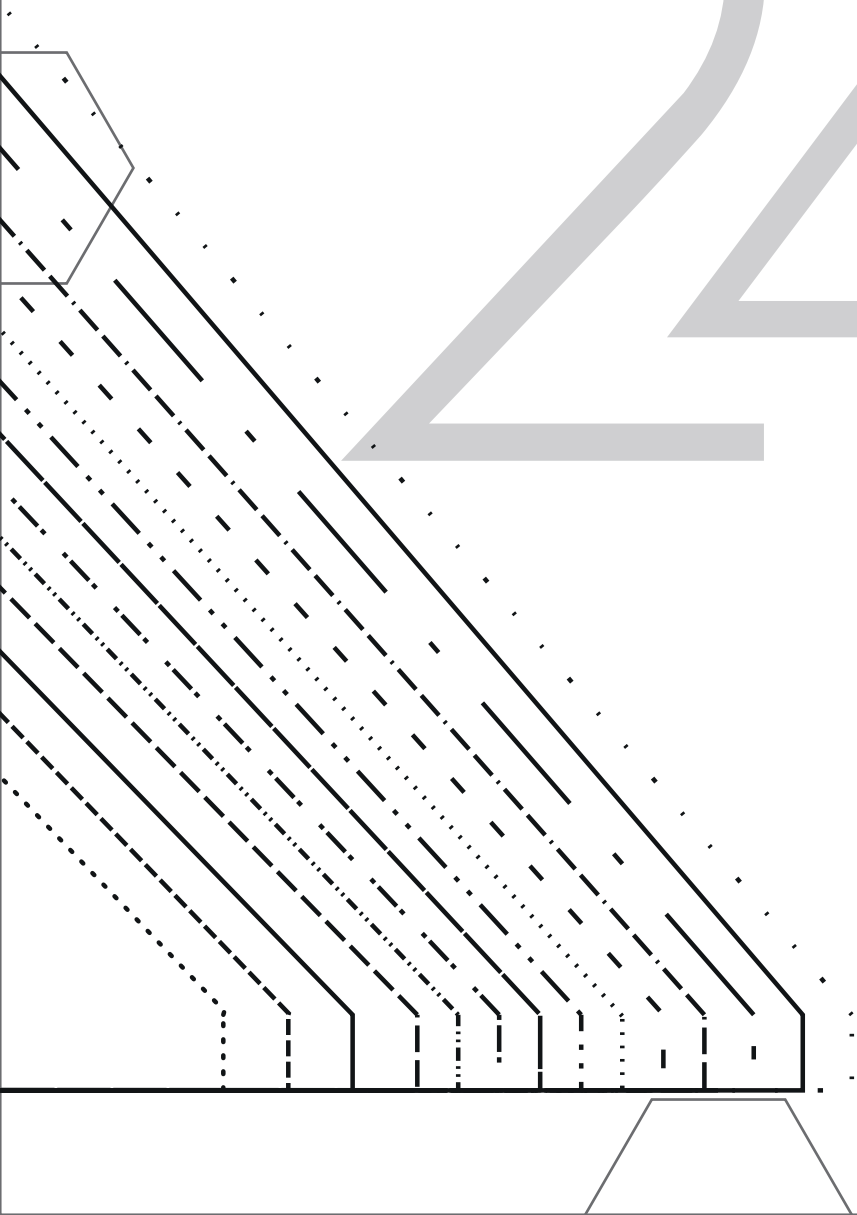
1x knippen (met deze letters naar boven)

Left sleeve colorblock 'pieces'

Part 1

Cut 1 (with these letters facing up)

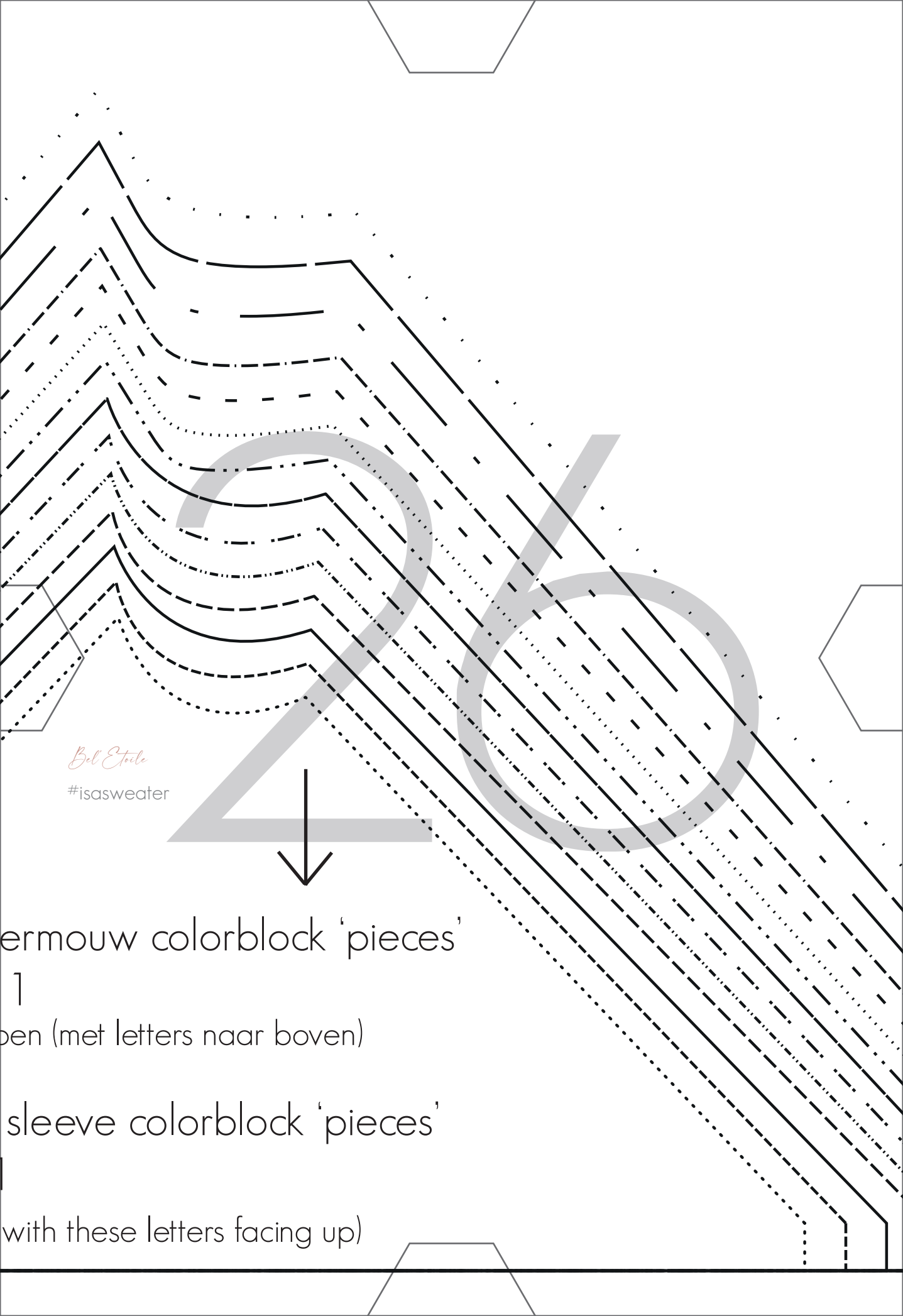
24



25

Recht
Deel
1x knipp

Right
Part
Cut 1



Bel Etoile

#isasweater

ermouw colorblock 'pieces'

1
open (met letters naar boven)

sleeve colorblock 'pieces'

with these letters facing up)

Bel' Etrole

#isasweater



Rechtermouw

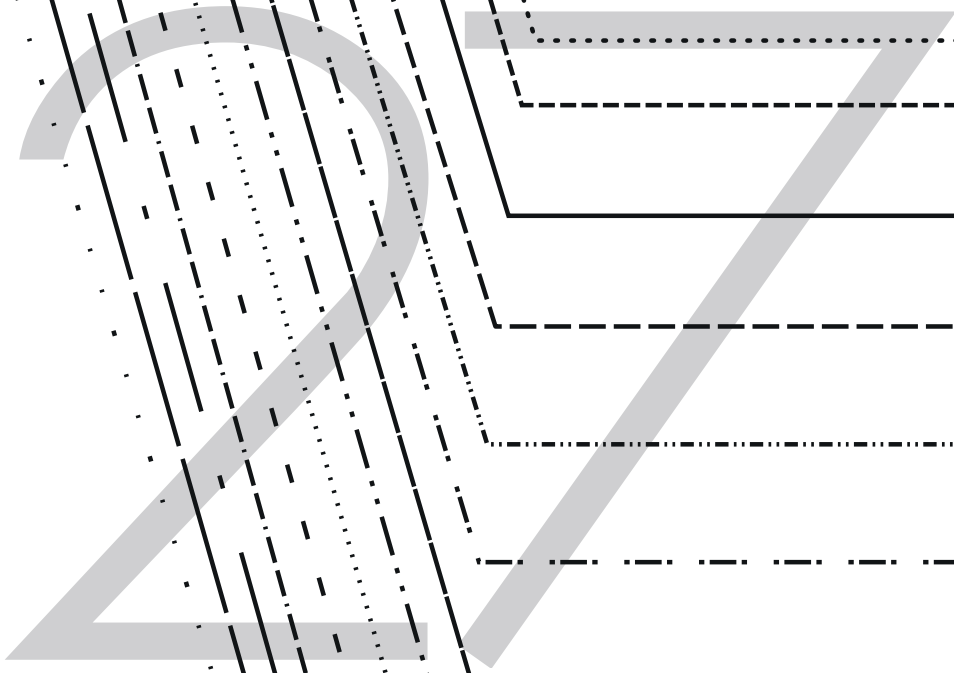
Deel 3

1x knippen (met

Right sleeve

Part 3

Cut 1 (with thes

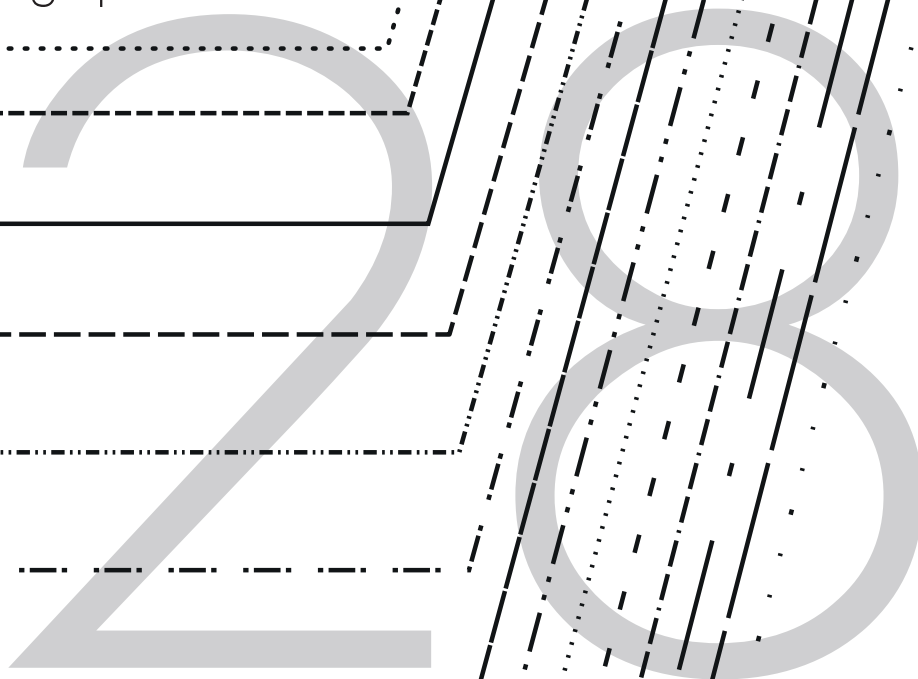


w colorblock 'pieces'

deze letters naar boven)

colorblock 'pieces'

e letters facing up)



Bel Etrole

#isaswea



20

Linkermouw colorblock 'pieces'

Deel 2

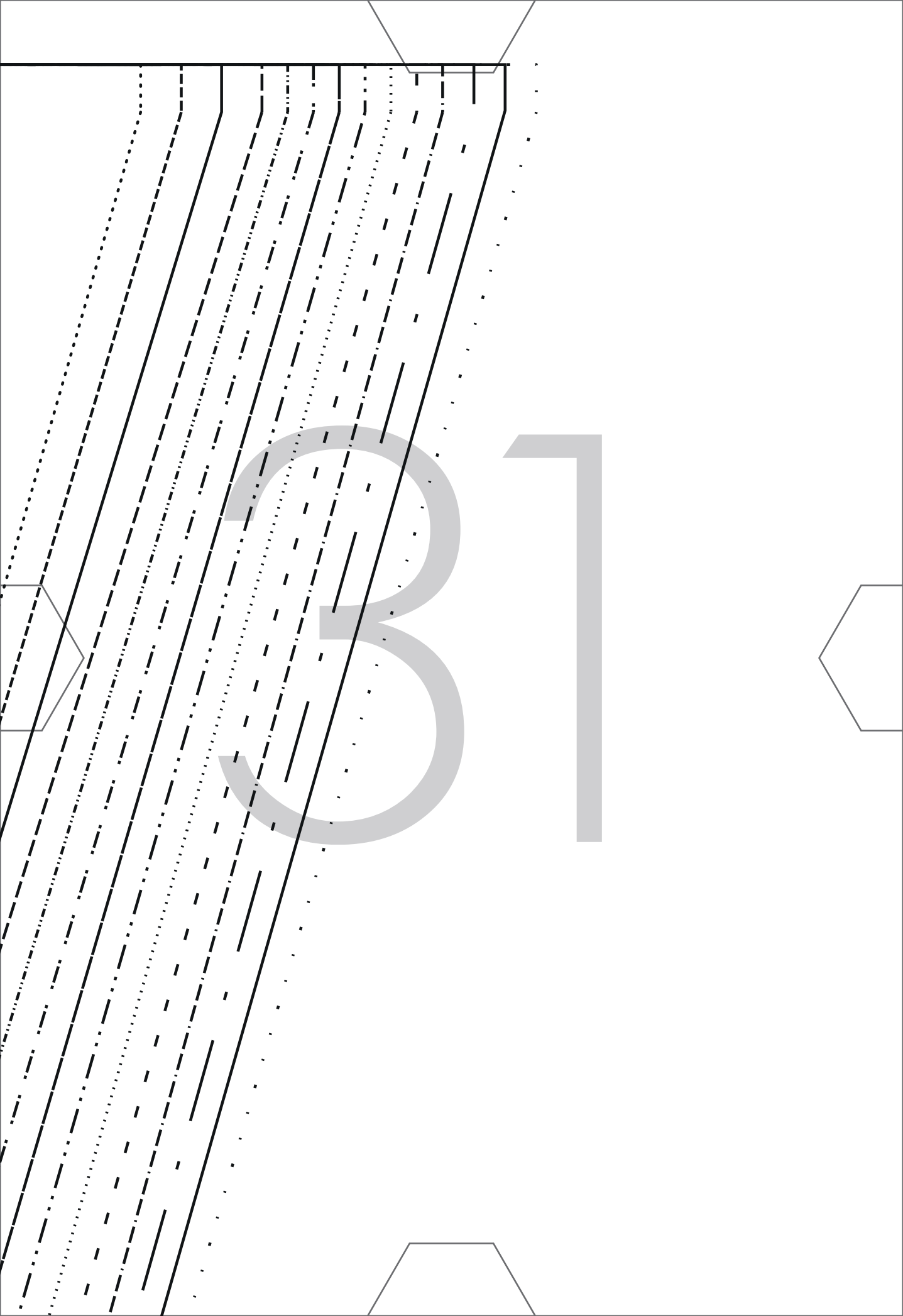
1x knippen (met deze letters naar boven)

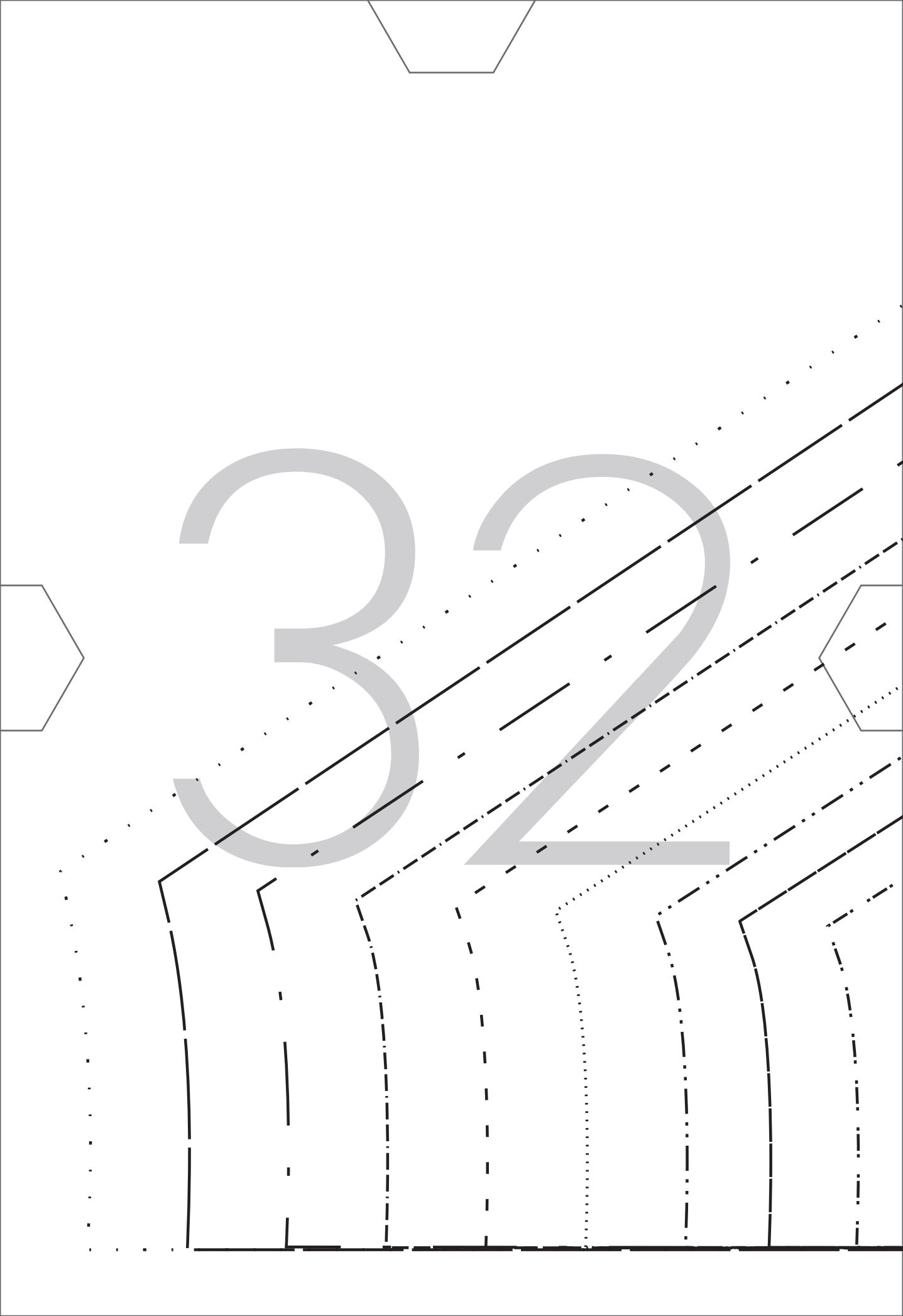
Left sleeve colorblock 'pieces'

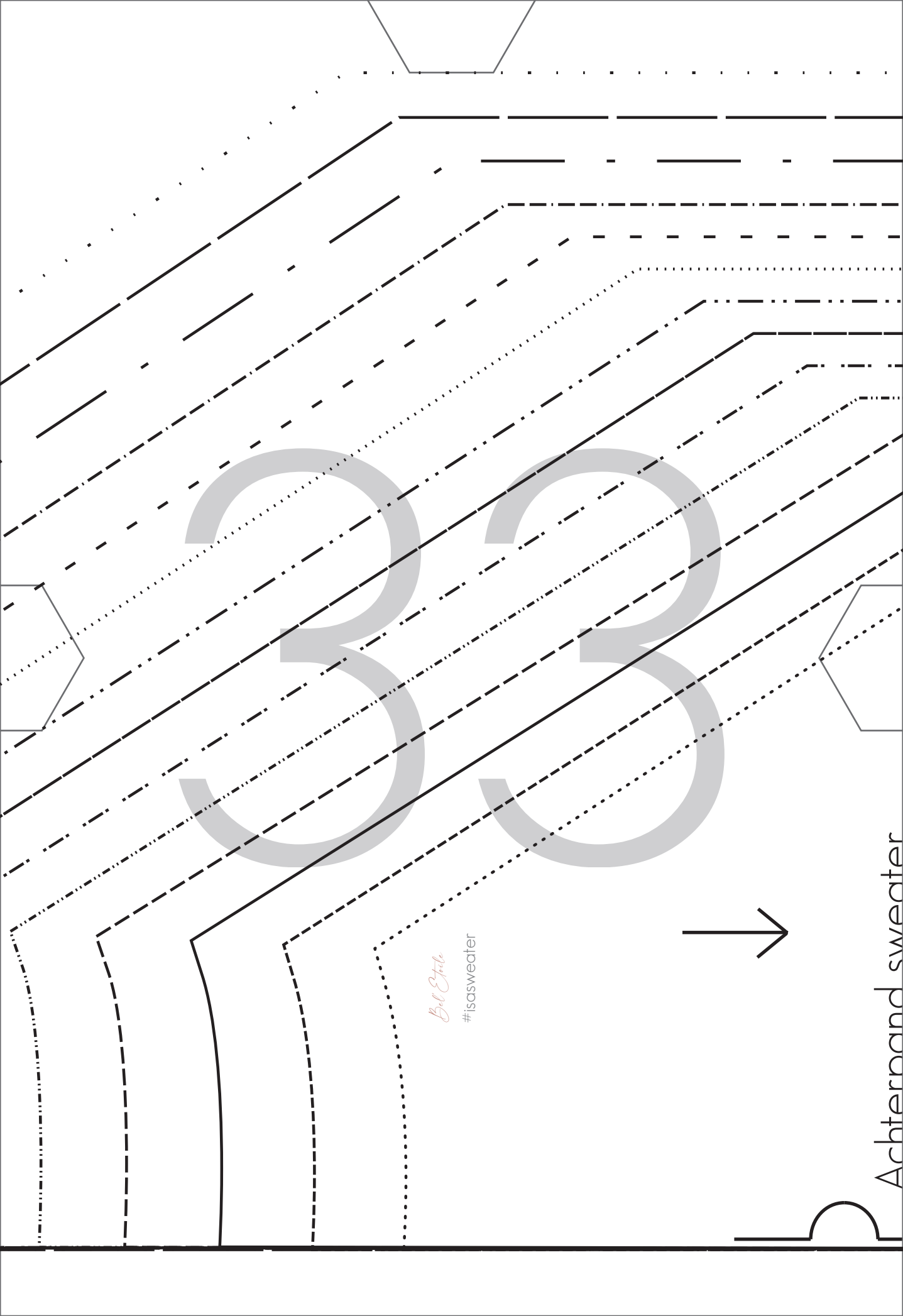
Part 2

Cut 1 (with these letters facing up)









Bel Etile
#isasweater

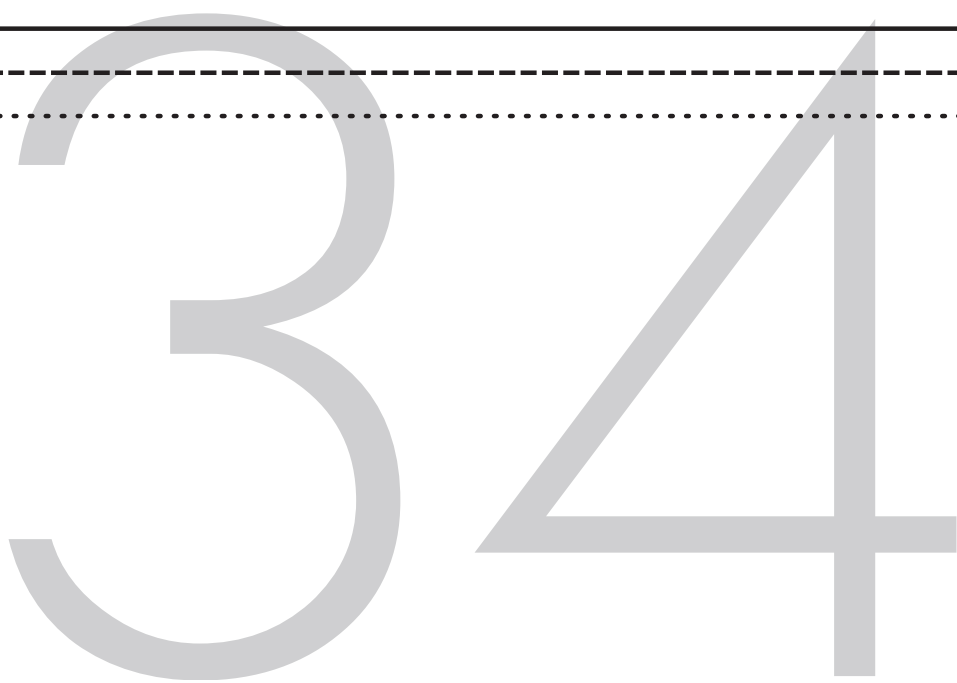
Achterband sweater

Pattern for bodice and skirt

1 x knippen aan stofvouw

Back bodice sweater

Cut 1 on fold



Halsboord

1 x knippen aan stofvouw uit boordstof

Bel'Etale

#isasweater

Neckband

Cut 1 on fold from ribbing

Boord sweater

2 x knippen uit boordstof

Waistband sweater

Cut 2 from ribbing

36

37

38

Bel Etale
#isasweater

Bel Etale
#isasweater

Mouwboord
2 x knippen uit boordstof

Cuff
Cut 2 from ribbing